

*Inspiring a love of learning through an education that values the development of the whole child*

14 February 2023

Week 3, Term 1

We welcome a new student and his whānau to Ōtari School. Nau mai, haere mai ki te ākonga hou me tōna whānau: **Arthur Kyle (Kōwhai)**



**Acting Principal** – Our DP, Susan West, will be participating in professional development in Christchurch on Thursday and Friday. Wairere Ropata will be Acting Principal for those 2 days.

**Montessori Strand Afternoon Tea** – Whānau are welcome to join the Montessori staff for a cuppa on Thursday 23 February, from 2.30-4.00pm in the hall.



© Can Stock Photo

**Immersion Strand Afternoon Tea** – Whānau are welcome to join the Immersion staff for a cuppa on Friday 24 February, 3.15pm -4.15pm.



**Paid Union Meeting** – On Monday 27 February, some teaching staff will be attending a Paid Union meeting at 2pm. The school will not close as we have enough staff to ensure children are well supervised.

**EOTC Week** – Whilst the Year 7/8 students are away at camp, the rest of the school will be participating in outdoor activities beginning with a **picnic day at Aotea Lagoon on Tuesday 28 February**. Buses leave school at 9.30am and return by 2.30pm. All whānau are welcome to join us. The cost per child is \$8.00. There will also be a Wheels Day on Friday 3 March (more details to follow).



**Camp** – Two weeks until camp! The teachers and students met today to find out more about camp. Students have equipment lists; please ensure they have everything they need. If you require some assistance with items, please contact Deborah - [deborah@otari.school.nz](mailto:deborah@otari.school.nz).

**CodeClub** will be starting next Monday, 20 February. Code Club is an Otari School after school activity for Year 4 to Year 8 students run out of Kererū classroom from 3.10 - 4.10pm on Monday afternoons. There is no cost associated with CodeClub but a koha to the school office is always appreciated. Code Club is run by volunteer teachers and parents so could be cancelled at short notice due to other things happening at school or people being away. Please ensure you are available to collect your child should you be asked to. If your child is interested in joining CodeClub please complete the attached form <https://forms.gle/SReJBZqnoHLh2iLRA>. If you have any questions about CodeClub please email Sacha [sacha@otari.school.nz](mailto:sacha@otari.school.nz).





**Guitar Lessons** – Our guitar tutor, Jamie, is starting lessons again on Thursday afternoons (during school time). If your child would like to participate, please contact Jamie at [jamie.pye.music@gmail.com](mailto:jamie.pye.music@gmail.com), 022-517-3848.

### Taonga Horomata – Virtues: Mahi Tahī, Cooperation

**Cooperation** is working together for the good of all. It is the willingness to stand side by side and use the different gifts each of us has to offer. We seek common goals in service of a unified vision. We blend our abilities to create something none of us could achieve alone.

*‘Alone we can do little; together we can do so much’. Helen Keller*



Activity	Who's Involved	Date & Time	Cost
Board Meeting	Board members	Mon 20 Feb, 6.30pm	
Camp	Yr 7/8	Tues 28 – Fri 3 Mar	
Picnic at Aotea Lagoon	Yr 1-6	Tues 28 Mar	<b>\$8.00</b>
Wheels Day	Yr 1-6	Fri 3 Mar	
Immunisations	Yr 7/8	Thurs 9 Mar	

Have a great week everyone.

Ngā mihi  
Susan

#### 2023 Term Dates

Term 1: Wed 1 Feb – Thurs 6 Apr

Term 2: Wed 26 Apr – Fri 30 Jun

Term 3: Mon 17 Jul – Fri 22 Sept

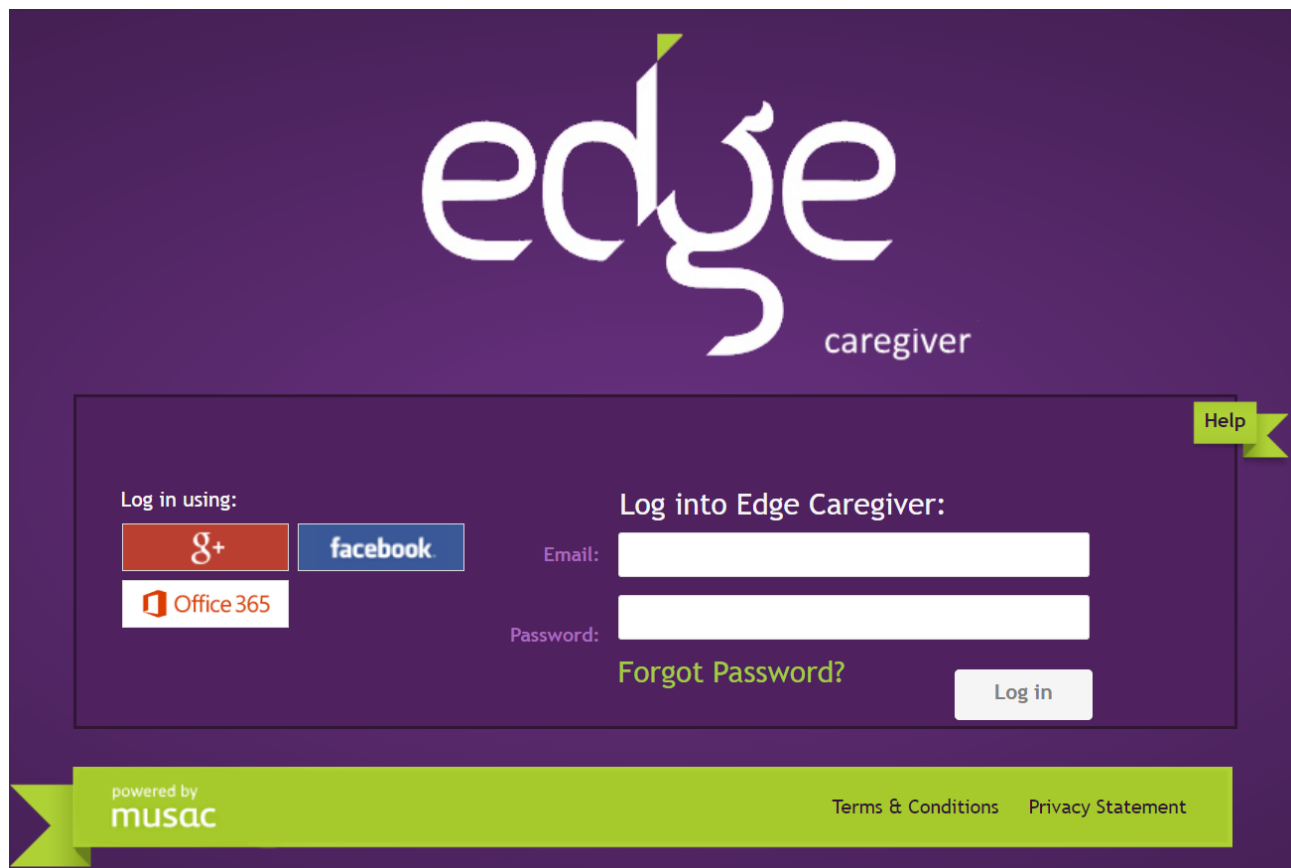
Term 4: Mon 9 Oct – Fri 15 Dec

**Teacher Only Days: Mon 24 Apr, 24 Oct**

# Using Edge Caregiver Portal and Mobile App

Access to the edge caregiver portal and mobile app uses the existing email address that your school has on record.

The edge caregiver portal/app allows you to view school information about your child(ren), and to pay school bills online if your school supports this. The portal & app gives you quick and easy access to the information for the children in your care as well as being able to receive announcements and notifications from the school.



To login:

1. Enter the website <https://parent.edgelearning.co.nz/> into your browser.
2. **Either:**
  - a. click the icon (either g+ for Google, Facebook or Office 365), that is associated with the email you have supplied to your school. A popup will appear asking for your login details. On entering this correctly the Edge caregiver home page opens,  
**or**
  - b. if your email is not associated with the three above (they are all free, easy to sign up to and don't necessitate you using that email for other purposes), type in the email address you supplied to the school. You will then be asked to supply a password. Choose the 'Forgot Password' link and you will be sent an email (to the address you logged in with). This will allow you to create/reset your own password.

Select your child from the top row. Summary data is displayed in separate tabs (dependent on whether they're attending a primary, area or secondary school using Edge) for:

- Attendance,
- Student Reports \*
- School Payments \*\*

- \* Assessment data & Reports are available when published by the school.
- \*\* Dependent on you having Bill Payer status *(and the school has setup online payments)*, the 'School Payments' page shows a balance and list of items owing for which the student has been billed. You may be able to pay from the 'School Payments' page (not currently supported at Otari). This page displays financial transactions for your student, with the balance due reflecting the amount totalled for your students at this school.

All other information including attendance is live. Where relevant, information from previous years can also be accessed.

If you haven't given the school an email address or are unsure about the detail please contact the school office.

## Edge Mobile App



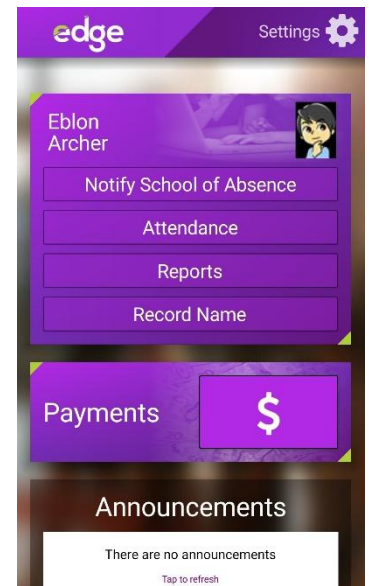
This can be downloaded from either Play Store (Android) or App Store (iOS). Search for musac edge.

Once installed you will be asked to make up a 4 digit pin then enter your Edge email and password.

In the app there is a series of labelled tiles that when tapped bring up information on your child's contact details, timetable,

attendance, NCEA results and related data. Your school may also push announcements and notifications to the app and optionally allow you to send 'Notify School of Absence' notifications to the school.

3 minutes of non-use the Edge app will log out and require you to enter your 4 digit pin to



After

## Upcoming COMMUNITY EVENTS

**Celebrating Wadestown Presbyterian Church on 11-12 March.** Wadestown Presbyterian Church has made the difficult and sad decision to close in late March 2023. Before we do this we need to celebrate our long and amazing history from our formation in 1881, to date. Over the weekend of Saturday 11 and Sunday 12 March we have a range of events planned. If you would like more details please go to our website at <https://www.wadestownpresbyterian.org.nz/> where you will find further details including how to contact us if you have further questions. If you wish to attend any of the events listed please complete the link to the [RSVP](#) form this is also available on our website.

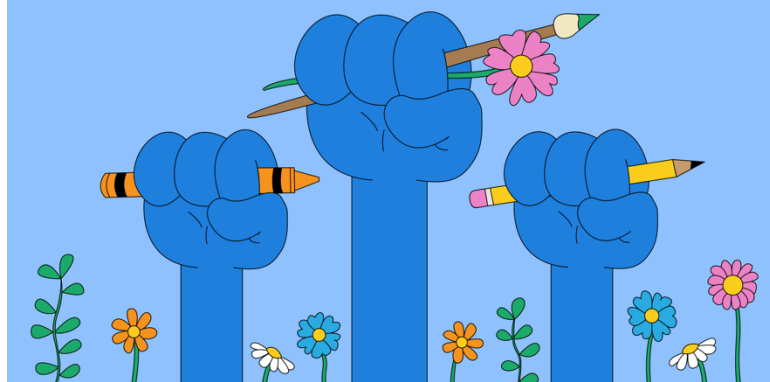
## WHAT IF WE JUST MADE ART, NOT THE CLIMATE CRISIS?

### Art Competition

The future is in our hands. Show us what a climate safe future looks, feels, or sounds like to you, in the form of art. There are no wrong answers, only possibilities.

Submissions accepted all over the Wellington region, including Kāpiti coast, but not the Wairarapa. Runs 12th December to 28th February.

Go in the running to have your art exhibited around Te Whanganui-a-Tara, and win up to \$700 in prizes!



## Western Zone Schools Rip Rugby Tournament **FUN DAY**

Girls yr 6,7 & 8  
Combined

Ian Galloway Park  
Thursday March 23rd

Email confirmation of entry to  
[Wests.junior.rugby@outlook.co.nz](mailto:Wests.junior.rugby@outlook.co.nz)

Entries close  
March 15th



## RIP INTO RUGBY THIS SEASON WITH WESTS!

JOIN WESTS JUNIOR RUGBY CLUB AND REPRESENT WELLINGTON'S WESTERN SUBURBS  
NURSERY GRADE, RIPPA RUGBY & TACKLE. AGE 3-13 - BOYS & GIRLS

LEADERSHIP

FUN

TEAM WORK

LIFELONG FRIENDSHIPS

# IT'S MORE THAN A GAME!!

REGISTER NOW AT:  
[WWW.SPORTY.CO.NZ/WESTSJUNIORRUGBY](http://WWW.SPORTY.CO.NZ/WESTSJUNIORRUGBY) OR EMAIL: [WESTS.JUNIOR.RUGBY@OUTLOOK.CO.NZ](mailto:WESTS.JUNIOR.RUGBY@OUTLOOK.CO.NZ)  
IAN GALLOWAY PARK, HOME OF WESTS RUGBY





Young people can struggle with learning for a myriad of reasons, and consequently, it can be expressed in their behaviour, emotional regulation, motivation and more! We know this can be a very confusing and often challenging space for young people and their families to navigate.

If your child is struggling at school, a comprehensive learning assessment may provide you with a clear understanding of what is getting in the way of them reaching their learning potential. Our learning assessments can identify:

- **Specific Learning Disorders**
- **A broader cognitive impairment such as an intellectual disability**
- **Specific emotional or behavioural difficulties.**
- **Gifted and talented learners**
- **Special Assessment Conditions.**

To enquire please contact us at  
<https://www.educationalassessments.co.nz/>

or via our emails:

Taylor- [taylor@noblepsyc.com](mailto:taylor@noblepsyc.com)

Dani- [danielle.robison.nz@outlook.com](mailto:danielle.robison.nz@outlook.com)

Phone: (+64) 028 464 0729

Or find more information on

<https://www.facebook.com/TaylorDaniEdPsych>

## Petone Rotary Fair Parking \$5

All proceeds going to Year 7&8 Camp



Saturday, 18th February 2023

16 Britannia Street,  
The School Closest to the Fair!

9:30 am - 4:00 pm

PIC•COLLAGE